



LYNN
UNIVERSITY

Student Life
Parent
Newsletter

Spring 2010 | Volume 1, Issue 2

Inside this Issue

Crisis in Haiti	1
Safe Spring Break Carnival	2
Multicultural Affairs	3
Office of International Student Life	3
Room Selection 2010, Housing and Residence Life-Q&A	4
Resident Assistant and Shield Mentor Selection	5
Career Services Tips for Parents	6
Career Advisory Board	7
Career Center Workshops	7
Get Fit, Get Out and Play	8
Who's Who	8
Important Dates	8
It's Not Too Late to Get Involved	9
Spring Extravaganza	9
Need Ride to the Airport	9

Crisis in Haiti

The earthquake that ravaged the country of Haiti on January 12 deeply affected the Lynn University community in many ways. Twelve students and two faculty members were in Haiti as part of a philanthropic study tour during the J-Term. Eight students have returned to the campus and reunited with their families. We are saddened to report the loss of Stephanie Crispinelli, Courtney Hayes, Christine Gianacaci, Britney Gengel, Dr. Richard Bruno and Dr. Patrick Hartwick.

The outpouring of support for the students, faculty and staff who have been deeply touched by this disaster has been tremendous. Not only do we have students and faculty still missing, but a number of our staff have lost a significant number of friends and relatives who lived in Haiti. Parents, students, alumni, faculty and staff, old and new friends of the university have come forward to lend support to Lynn.

The students on our campus initiated a "Journey of Hope" effort by having prayer vigils every night at 7:00 p.m. in the Perper Plaza. Each night the Lynn community gathered and students remembered the members of the "Journey of Hope" who were still missing.

The university continues to honor the request for privacy for the surviving families. The university website (www.lynn.edu) contains updates and the most accurate information. For those who wish to make contributions to the relief efforts for the people of Haiti may do so through the university's Haiti Crisis Fund link at www.lynn.edu/Haiti. Click on Lynn University Haiti Crisis Fund. Contributions can also be made to a charity of your choice.



Paul S. Turner
Dean of Students



Safe

Spring Break Carnival

The Safe Spring Break Carnival is an annual event, designed to raise student awareness about being safe over Spring Break. It is an event which brings students, staff, faculty and outside service providers together, to provide educational programs and activities to the Lynn Community.

This year's Spring Break Carnival will be held on Wednesday, February 24th from 11:00 a. m. until 1:30 p.m. Some of the events will include driving an obstacle course, wearing Fatal Vision Goggles, and a car containing a computerized DUI Simulator. Field Sobriety Tests will be conducted, and a demolished car Meagan Napier was in at the time of the crash that killed her, when college student, Eric Smallridge, was driving under the influence will be displayed. Additional activities will include Lynnopoly game (the idea for the game was thought of by student Heather Sears), a Dunk Tank, Virtual Bars, Global I. Q. Testing, Keeping Safe with Facebook, Life Planning and Wellness Spin the Wheel game and many other programs.

An educational packet, contained in a draw string bag, that has Lynn University, Keeping it Safe, Spring Break 2010 printed on it, will be distributed to students who sign a pledge to stay safe over Spring Break.



The following are program participants:

Students and Faculty

Gay-Straight Alliance

President: Devin Reaves;
Advisor: Marcheta Wright

I-Pulse

President: Jennifer O'Toole;
Advisor: Stefanie Powers

Law and Justice Club

President: TBA;
Advisors: Dr. Karen Casey-Acevedo
and Sindee Kerker

Psi Chi

President: TBA;
Advisor: Dr. Robert Reidel,
Dr. Debra Ainbinder

Residence Hall Association

Chairperson:
Stephanie Hammerman;
Advisors:
Joy Doliber and Dominick Viola

Sigma Sigma Sigma

President: Lee Zoretic;
Advisor: Kelley Segers

P.E.A.C.E. Program

Student Internship –
Supervisors: Gail DeCina,
Victoria Frost

Shield Mentors

Housing and Residence Life

Relay For Life

Advisor: Ann Janette Weaver

Hillel

Advisor: Rita Albert

Athletics
Campus Recreation
Campus Safety and Security
Career Center
Center for Global Education
Communications
Counseling Center
Health Center
Offices of International Student Life
Women's Center

Outside Organizations

Double Eagle Distributors
Florida Highway Patrol
Intensive Case Management
MADD
Narcotics Anonymous
NOPE
Renee Napier

Food and Drink

Chicken & Veggie Skewers
Cotton Candy
Mocktails
Popcorn
Water & Soda

Multicultural Affairs: New Addition to Student Life

The Office of Multicultural Affairs opened its doors last fall and is rapidly expanding within the University community. We are off to a great start offering a variety of exciting programs and services for our students. Programs included the celebration of Hispanic Heritage Month in October, a Diversity Summit in November, World Aids Day and Festival of Lights in December. We also co-sponsored a series

of programs in conjunction with our multicultural student organizations. Multicultural Student Organizations include: Black Student Union, Gay Straight Alliance, Organization of Latin American Students, Caribbean Club, Muslim Student Association, Chabad Student Center, and Hillel.

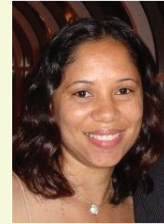
The spring semester will be just as busy with celebrations such as Black History

Month and programs such as the Famous Black Inventor's Museum and Multicultural Day. The goal of Multicultural Affairs is to cultivate a campus-wide community that represents and celebrates the diversity and culture of Lynn University's students. For more information on our programs and services, please contact our office at 561-237-7531.

Multicultural Affairs Events

Black History Month
Kickoff: Feb. 1

Famous Black
Inventors Museum: Feb. 12



Morayma James,
Coordinator
Office of
Multicultural
Affairs

Office of International Student Life

Lynn University takes pride in being individualized, innovative, and international. The Office of International Student Life is one of the newest units under the Division of Student Life. We provide advising and assistance to all F-1 international students in regards to immigration, cultural adjustment, international insurance, and serve as a major resource for international students.

This semester we welcomed over thirty five new F-1 international students from countries including Romania, Peru, South Africa, Switzerland, Panama, Morocco, Saudi Arabia, Denmark, and many more. We

have been excited for their arrival and hope they enjoy their experience in the United States. Lynn University currently has over 400 international students representing 84 different countries.

Before your student's arrival at Lynn, our office became involved with your son's or daughter's Lynn experience by processing the necessary paperwork to apply for the F-1 student visa. After your student's arrival, the Office of International Student Life is primarily responsible for ensuring that the international student status is maintained and remains "active." This is done by

educating your son or daughter on minimum enrollment requirements, international health insurance, employment authorizations, and other federally mandated regulations.

Things to look forward to in this upcoming semester include Optional Practical Training Workshops for those international students graduating in May, Tax Workshops, Xpression, and much more.

Joseph McNamara, Coordinator
International Student Life



Room Selection 2010!

Room selection for the 2010-11 academic year will be taking place in the last two weeks of March. Housing and Residence Life staff will be distributing room selection information to students living on campus during late February. Please be looking for a letter from our office just before Spring Break explaining the process to select a room on campus. We are happy to announce that the returning student housing deposit has been reduced to only \$100, an 80% reduction!

The housing selection process provides your student the opportunity to select a space in the community that best suits his or her needs and preferences. However, there is no guarantee that the space he or she wishes to live in will be available for selection. In order for your student to participate in the room selection process, he or she must:

- (1) Be a current residential student, or have completed all new student paperwork with the admissions office or completed housing paperwork (for commuters looking to reside on campus) with the Office of Housing and Residence Life
- (2) Pay a \$100 housing deposit
- (3) Clear any outstanding student account balances.

The price of living on campus has not increased for the 2010-11 academic year. There are not many off campus housing opportunities that can say the same! The cost for a double room with a private bath is \$7170/year and with a standard 19-meal plan it is \$11,950/year. Please keep in mind that we are a residential campus and require students to live on campus for at least four (4) semesters. There are some exceptions to this policy and there is an approval process through the Office of Housing and Residence Life.

Your student will get a priority number card that will specify a certain day and time to select a room. The numbers are computer randomized and assigned to all current residential students (except graduating seniors) prioritized by academic class standing. Keep in mind that we do not have a high number of single occupancy spaces on campus. We will attempt to accommodate all preferences, especially if the single is medically necessary. However, there are no guarantees for single rooms.

Q&A

Questions and Answers from Housing and Residence Life and Student Involvement.

Q: What is there to do on campus on the weekends?

A: The Office of Housing and Residence Life staff offer a weekend programming series, HRL Afterdark, that has something going every Saturday night. The programs range from free movies at our local cinema and a trip to Sawgrass Mills for some outlet shopping to yoga classes and Wii competitions.

Student Involvement and our campus programming board host Friday Flicks every Friday night in the Knights' Court. There is a great movie and food, not to mention fun folks!

Q: Who can my child turn to if there is trouble with his/her roommate?

A: The first step is to have your student talk with their roommate in a calm and collected manner. Second, the Resident Assistant (RA) who lives on the floor/wing is available for your child. The RA is trained in conflict resolution and can usually settle any disputes quickly. If the conflict continues, our Community Advisors will sit down with both roommates and create a room agreement. They will talk through the issues and help make things more livable for the roommates. The Area Coordinator is available for any high level issues.

Resident Assistant and Shield Mentor Selection



Resident Assistants

The Office of Housing & Residence Life Resident Assistant (RA) and Shield Mentor selection for the 2010-2011 academic year is underway. If your student is interested in a student leadership position that contributes to the Lynn University community and helps others, then this is a great opportunity.

The Resident Assistant (RA) is a student staff member working to build an involved and positive community in the University Residence Halls focused on individual interactions, personal connections, and engaging residents in campus life. The Shield Mentor (SM) is a student staff member working with Residence Life staff to build an involved and positive community in the University Residence Halls focused on providing programmatic opportunities to educate and engage residents in residential and campus life.

The selection process is detailed and support from home is important. Your

son or daughter should start by reading over the Resident Assistant or Shield Mentor Position Description, to ensure a full grasp of the responsibilities of the position. The interview and group process will take place on February 20th and 21st and is the most important part of the selection process.

There are many resources available across campus to help your student become a more successful candidate. He or she should speak with a current Resident Assistant, Community Advisor, or your Area Coordinator, to gain a better understanding of the position. The Career Center is also available to assist in developing (or enhancing) resumes and brush up on interviewing skills. Their service is free of charge and available to all students.

Amy Garbacz,
Director
Housing and
Residence Life

Q&A Cont.

Q: If Lynn doesn't have a club that my daughter or son is interested in, what should she/he do?

A: Your child can go to the Office of Student Involvement and talk with one of the staff members about creating a club. The office is located on the 2nd floor of the Student Center.

Q: Are the residence halls open during Spring Break?

A: Yes, the hall will remain open during Spring Break. A staff member will do safety rounds each evening, just as is done during the rest of the term.

Q: When do the University Residence Halls close for the semester?

A: Residence Halls close on May 5, 2010 at noon. Any students participating in graduation will be able to have an extended stay until May 9, 2010.

Q: Can my child live on campus during the summer term?

A: Yes, housing is available and more information will be distributed in April.

Amy Garbacz, Director
Housing and Residence Life

Room Selection 2010!

Squatter's Days: Mar. 17, 18, 19
New Room: Mar. 22 & 23
Summer Housing - April 8

Career Services tips for Parents...

Help Your Student Get the Most from our Annual Career Fair

The Career Fair will be held Wednesday, April 7, 2010 from 10 a.m.-3 p.m. in the Green Center. There will be several employers from various industries eager to talk with our students about available full and part time positions, internships, and volunteer opportunities. Each year we are asked questions about preparation and participation for the event. This is where you come in! By answering the questions below, you can help us, help your student ACE the Career Fair!

The Crash Course: Career Fair Tips

(Students will learn tips on how to better prepare themselves for the career fair with interview, resume skills building and dress for success tips)

Wednesday, February 24,
4-5 p.m.

Friday, March 19, 1-2 p.m.

Fashion Career Day

(Students will learn from industry fashion experts about career options in the fashion world)

Thursday, March 25, 9 a.m.-4 p.m.



Our staff is here to help your student launch their career. Please feel free to contact us if you have any questions. If you would like to have your companies represented at our career fair please contact, Christine Childers at 561-237-7286 or cchilders@lynn.edu.

Carolyn Thorpe, Career Planning Specialist
Brittany Glazier, Career Counselor

How

should students prepare for a Career Fair?

Review the list of organizations that will be attending the fair, then research those employers of interest to them. They should visit the Career Resource Library for company literature, and do research on the organization's website.

Dress Professionally - Wear a suit; handle this as they would a regular interview.

Wear comfortable shoes - Lines are frequently long and you should expect to wait, especially for some of the popular companies.

Resumes – Bring several resumes to the fair - at least two for each company of interest.

Why

should your student attend a Career Fair?

Find out about specific employers

Get more information about career options before choosing a major

Research the demand for someone in your field

Make contact with a particular company

Practice networking and communication skills

Apply directly for an internship, volunteer, or paid position

To make a good (or great) impression in person

Career Center Advisory Board

Connects Lynn students with Local Employers

At the Career Center, we know that networking is one of the keys to finding a job or internship, especially in the current labor market. We are helping students make connections with local employers through our Advisory Board, comprised of ten representatives of various industries in the south Florida area. Members help students by conducting some of our workshops, providing tips via our MentorLink program, and by giving Career Center staff invaluable advice on how to prepare students for the latest trends in the hiring process.

This spring, Board members will be conducting several workshops for students and many will participate in our upcoming Career Fair on April 7th. Their

participation on our Board also serves to spread the good word about Lynn in the business community. Enterprise Rent-a-Car has also funded two grants for our MentorLink program, which has been of tremendous help.

Current Advisory Board members represent the following employers:

- Boca Raton Resort and Club
- Enterprise Rent-a-Car
- The Breakers Hotel
- Boynton Beach Police Department
- The Public Relations People
- US Department of Equal Employment Opportunities Commission (EEOC)
- American Alliance for People with Disabilities
- Lynn Insurance
- Nova Student Educational Centers
- Classic Residence by Hyatt

Chris Childers, Director Career Development & Internships



Left front:

Megan Sheiman, Recruiting Manager,
The Breakers Hotel

Chris Childers, Director of the Hannifan
Center for Career Development &
Internships

Jene Kapela, Assistant Director, Student
Educational Centers Office of Student
Engagement, NOVA Southeastern University

Louise Sundermeier, (past member)

Sandy Tagliavia, Human Resources Director,
Boca Raton Resort and Club

Sgt. Tom McCabe, Boynton Beach Police
Department

Back Row: Left to right

Diana Keith, President, M-Level Systems
Consulting (past member)

Carl Hoffman, Chief Operating Officer,
American Alliance for People with Disabilities

Eduardo J. Angulo, Regional Recruitment Su-
pervisor, Enterprise Rent a Car-(past member)

Paul Paguaga, Human Resources Manager,
Lynn Insurance

Current Members Not in picture:

Ashley Linnell, Regional Recruiting Manager,
Enterprise Rent-A-Car

Wendy Bednarcik, Human Resources
Director, Classic Residence-Hyatt

Barbara Cambia, President, The Public
Relations People, Inc.

Jacqueline McNair, District Director, US
Equal Employment Opportunity Commission

Career Center Workshops & Programs

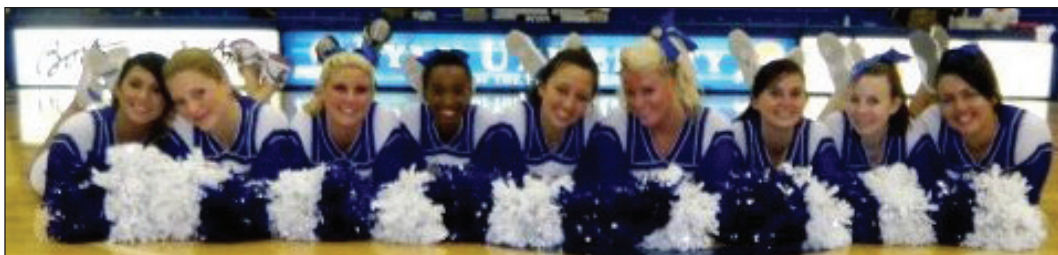
Spring 2010

- Career & Internship Fair
- Career Fair Tips
- Student Employment 101
- Sexual Harassment
- Networking:
- Using Social Media for Career Connections
- Women in Non-Traditional Careers
- Guerilla Job Search
- Fashion Career Day
- Dining Like a Diplomat
- Walk-in Resume Review
- Dress for Success Tips

**Contact: Gordon Levy | 561-237-7288 |
glevy@lynn.edu**

Get Fit & Get Out and Play

We're ready to start out 2010 with ways to get active, stay fit, and get connected!



Fitness Center:

Campus Recreation has made some changes to benefit your sons and daughters. The fitness center hours have been expanded, we are now open to midnight most days.

Fitness Center Hours

M-Th: 7am - midnight

F: 7am - 7pm

S: 12pm - 7pm

Su: 12 pm - midnight

Fitness Classes:

We have also expanded our fitness class schedule to offer more options to your students. Our new classes are: Weights 101, Walking Warriors, Cardio Kickboxing, Zumba, Boot Camp, and 60 minutes at 6. Have your student see the

fitness center monitor for a complete schedule of classes or call 561.237.7REC.

Intramurals & Activities:

February is packed with a ton of recreational activities! We have the following events planned: Free throw/3 point contest, 5-on-5 basketball league, Billiards Tournament, and Ping Pong Tournament. Have your son or daughter contact us to sign up to participate in any of these events. March will be sure to bring a set of new events so tell your students to be on the lookout.

Club Sports:

If your son or daughter likes to play competitive sports, but is not interested in playing for a varsity collegiate team, club sports is for them! Lynn has many club sports: Dance, Cheer, Soccer, Rugby, and we have two teams that are in the process of forming: Lacrosse and Hockey. If your student wants to join any of these club sports or is interested in a different sport than those listed below, encourage them to stop by the Campus Recreation offices.

Christina Johnson,
Director
Jared Gilbert,
Coordinator

Important Dates

Safe Spring Break Carnival
Feb. 24

Spring Break
March 1-5

Career Fair
April 7, 10am-3pm

Paws and Relax
April 28, 2010

Final Exams
April 29-May 4

Residence Halls Close
May 5 @noon
*except for May graduates

Commencement
May 7-Evening Students
May 8-Day Students

Undergraduate Summer Classes Begin
May 10

Who's Who? Division of Student Life

Vice President
Dr. Phillip Riordan

Dean of Students
Paul Turner

Associate Deans for Student Life
Dr. Gary Martin
Louise Sundermeier

Campus Ministry
Father Martin Devereaux

Campus Recreation
Christina Johnson, Director

Campus Safety and Security
Bill Testa, Chief

Career Center
Christine Childers, Director

Counseling Center
Nicole Ovedia, Director

Assistant Dean of Students
Anthony Altieri

Health Center
Rita Albert, Director

Housing and Residence Life
Amy Garbacz, Director

International Student Life
Joseph McNamara, Coordinator

Multicultural Affairs
Morayma James, Coordinator

Student Involvement
Anthony Altieri, Assistant Dean

Women's Center
Victoria Frost, Coordinator



It's Not Too Late to Get Involved!

Many students believe that the spring semester is too late to get involved. Guess what? They're wrong! Lynn University still has many opportunities to become active on campus! Here are a few examples:

The Knights Activities Team (KAT)

meets every Monday at 5 p.m. in the Knight's Court. If your student likes planning fun events such as comedians, concerts, movie nights, etc. then KAT is for them! Anyone is welcome!

Wanted:

Knights of Distinction. Greek Life is looking for a few good men and women to join their organizations. Did you know that Greek chapters recruit all year long? It's not just a onetime shot! If your student is interested in Greek Life, have them stop by the Office of Student Involvement to find out what Lynn's chapters are up to!

Enjoy volunteering?

Knights in the Community (KIC) is a campus organization that plans different community service events around Boca Raton. This fall we went to the Humane Society, hosted a Fall Festival for a local school and organized an 80s prom to raise money for breast cancer. We are always looking for new ideas—encourage your student to join us and see how he or she can make a difference! KIC meets every Thursday at 5 p.m. in the Knight's Court.

Students who are **interested in government** and want to change the way things are done on campus are encouraged to get involved in the Student Government Association (SGA)! They meet every other Tuesday at 7 p.m. in the cafeteria. Students have the power to make change and be a part of it!

Lynn boasts a number of clubs and organizations. There is sure to be a club that fits any student's interest... and if there's not, students can create their own! Only 6 people are needed to start a new club. Suggest for your student to stop by the Office of Student Involvement to find out more. It's not too late-get involved!

Annjanette M. Weaver, Coordinator of Student Involvement

Spring Extravaganza

Join The Division of Student Life at the 2010 Spring EXTRAVAGANZA on April 22, 2010. FREE for your students to attend and packed with fun games, events, activities, prizes, and food! This is a great opportunity for students to enjoy campus and socialize with each other throughout the day. Don't let your student miss out on this event!

**Mike Scott, Coordinator
Student Involvement**

Need a Ride to the Airport?



Students who need to get to the airport, at any point during the semester, can use South Florida's Tri-Rail system which not only serves the airports, but several destinations between Palm Beach and Miami at a very reasonable cost! The university shuttle will transport students to the Yamato Road Tri-Rail station during the shuttle's normal operating hours so that students are able to utilize this great service. More information about the Tri-Rail program is available at <http://www.tri-rail.com/>.